

(E) Vanguard Global Health Care

VGHCX Vanguard Specialized Portfolios Health Care Fund USMF

© StockCharts.com

28-Apr-2017

Open 201.23 High 201.23 Low 201.23 Close 201.23 Chg +0.62 (+0.31%) ▲



Equities

(EU) EUROPE

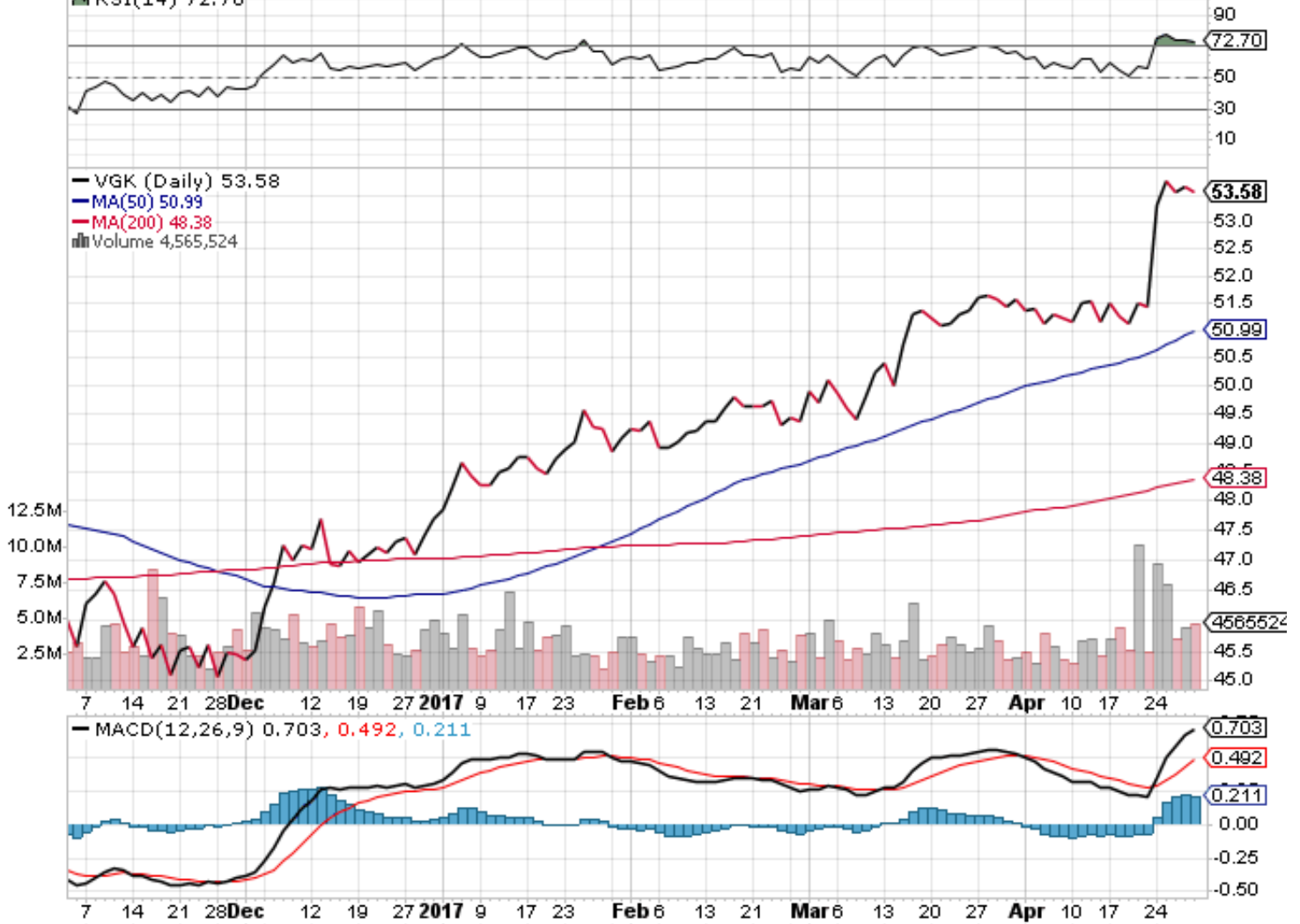
VGK Vanguard FTSE Europe ETF NYSE

© StockCharts.com

28-Apr-2017

Open 53.74 High 53.76 Low 53.58 Close 53.58 Volume 4.8M Chg -0.10 (-0.19%)

▲ RSI(14) 72.70



Europe

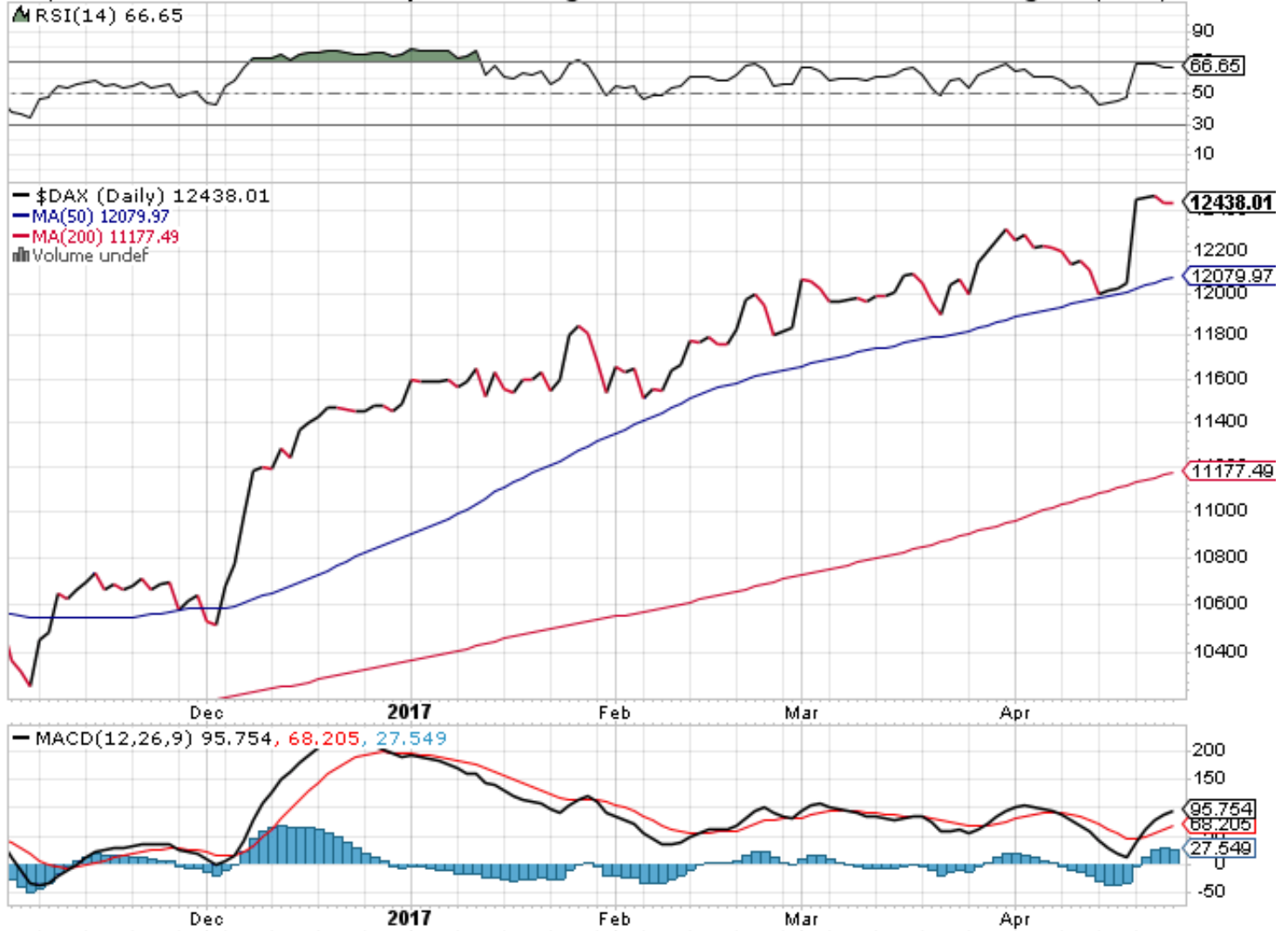
(EU) GERMANY

\$DAX German DAX Composite (EOD) DEUT

© StockCharts.com

28-Apr-2017

Open 12417.89 **High** 12462.11 **Low** 12414.10 **Close** 12438.01 **Chg** -5.78 (-0.05%) ▼



Europe

(EU) Greece

GREK Global X MSCI Greece ETF AMEX

© StockCharts.com

28-Apr-2017

Open 8.55 High 8.60 Low 8.48 Close 8.57 Volume 638.1K Chg +0.10 (+1.18%) ▲

▲ RSI(14) 68.36



Europe

(FI) \$ US DOLLAR

\$USD US Dollar Index - Cash Settle (EOD) ICE

28-Apr-2017

© StockCharts.com

Open 99.07 High 99.12 Low 98.58 Close 98.90 Chg -0.06 (-0.06%) ▼



Fixed Income

(FI) 20 yr TREASURY

TLT iShares 20+ Year Treasury Bond ETF Nasdaq GM

© StockCharts.com

28-Apr-2017

Open 121.60 High 122.43 Low 121.55 Close 122.35 Volume 8.2M Chg +0.27 (+0.22%) ▲

▲ RSI(14) 53.36



Fixed Income

(FI) Barclays 7-10 Yr T-Bond Fund

IEF iShares 7-10 Year Treasury Bond ETF NYSE

© StockCharts.com

28-Apr-2017

Open 106.32 High 106.65 Low 106.27 Close 106.60 Volume 5.5M Chg +0.11 (+0.10%) ▲

▲ RSI(14) 56.94



Fixed Income

(FI) iShares BARCLAYS

AGG iShares Core U.S. Aggregate Bond ETF NYSE

© StockCharts.com

28-Apr-2017

Open 108.98 High 109.25 Low 108.91 Close 109.25 Volume 5.8M Chg +0.19 (+0.17%) ▲

▲ RSI(14) 59.67



Fixed Income

(US) Aerospace & Defense

ITA iShares U.S. Aerospace & Defense ETF NYSE

© StockCharts.com

28-Apr-2017 **Open** 154.75 **High** 154.99 **Low** 153.46 **Close** 153.76 **Volume** 139.2K **Chg** -0.59 (-0.38%)

▲ RSI(14) 64.29



Equities

(US) iShares BIOTECH



US Equities