

(E) Vanguard Global Health Care

VGHCX Vanguard Specialized Portfolios Health Care Fund USMF

© StockCharts.com

13-Apr-2017

Open 197.70 High 197.70 Low 197.70 Close 197.70 Chg -0.44 (-0.22%) ▼



Equities

(EU) EUROPE

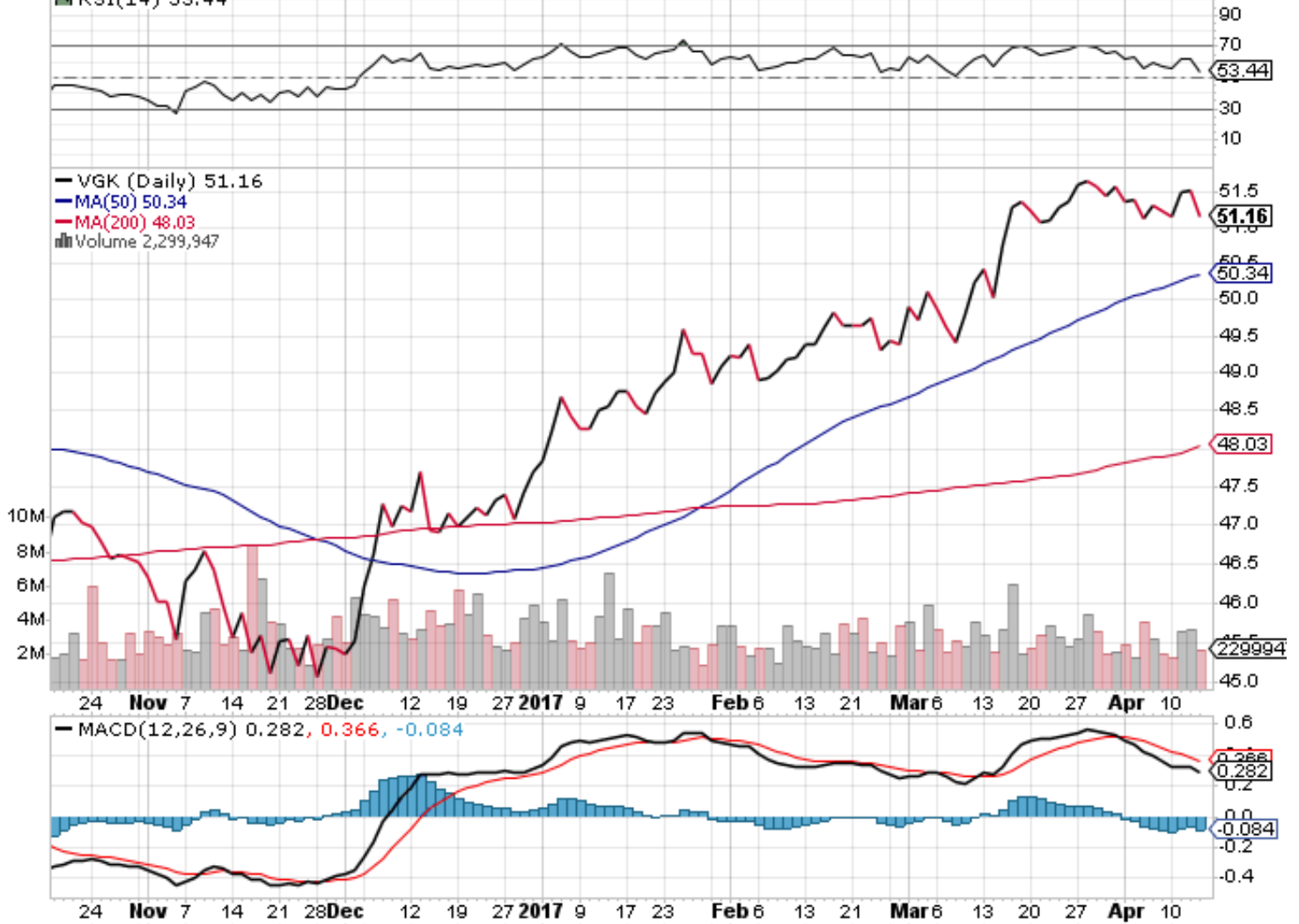
VGK Vanguard FTSE Europe ETF NYSE

© StockCharts.com

13-Apr-2017

Open 51.27 High 51.35 Low 51.12 Close 51.16 Volume 2.3M Chg -0.37 (-0.72%)

▲ RSI(14) 53.44



Europe

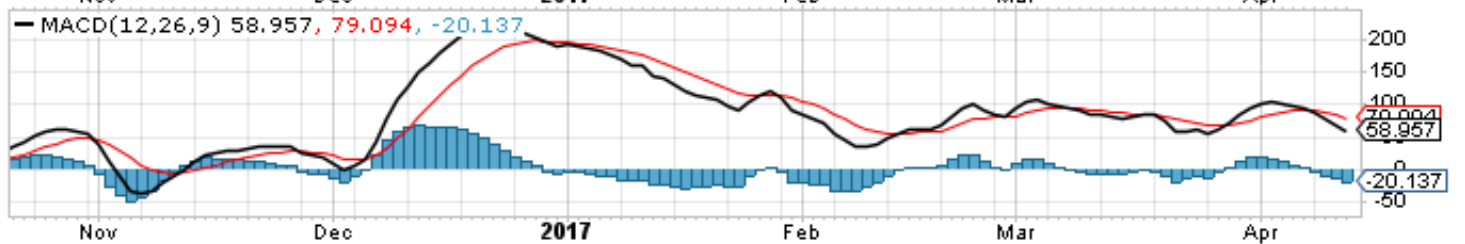
(EU) GERMANY

\$DAX German DAX Composite (EOD) DEUT

© StockCharts.com

13-Apr-2017

Open 12137.57 High 12147.70 Low 12089.94 Close 12109.00 Chg -45.70 (-0.38%) ▼



Europe

(EU) Greece

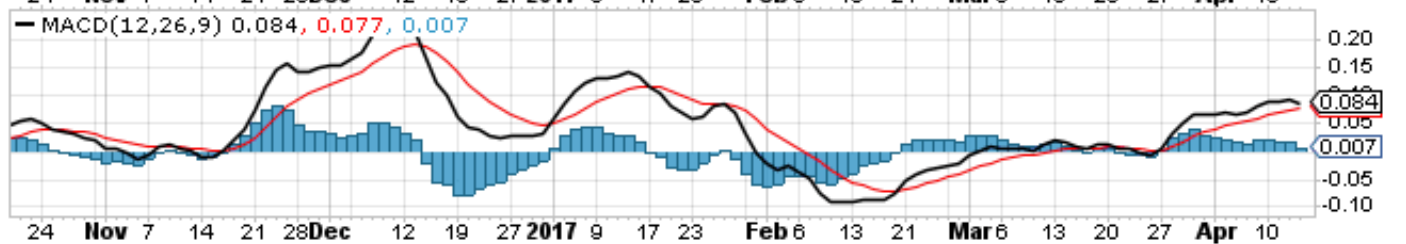
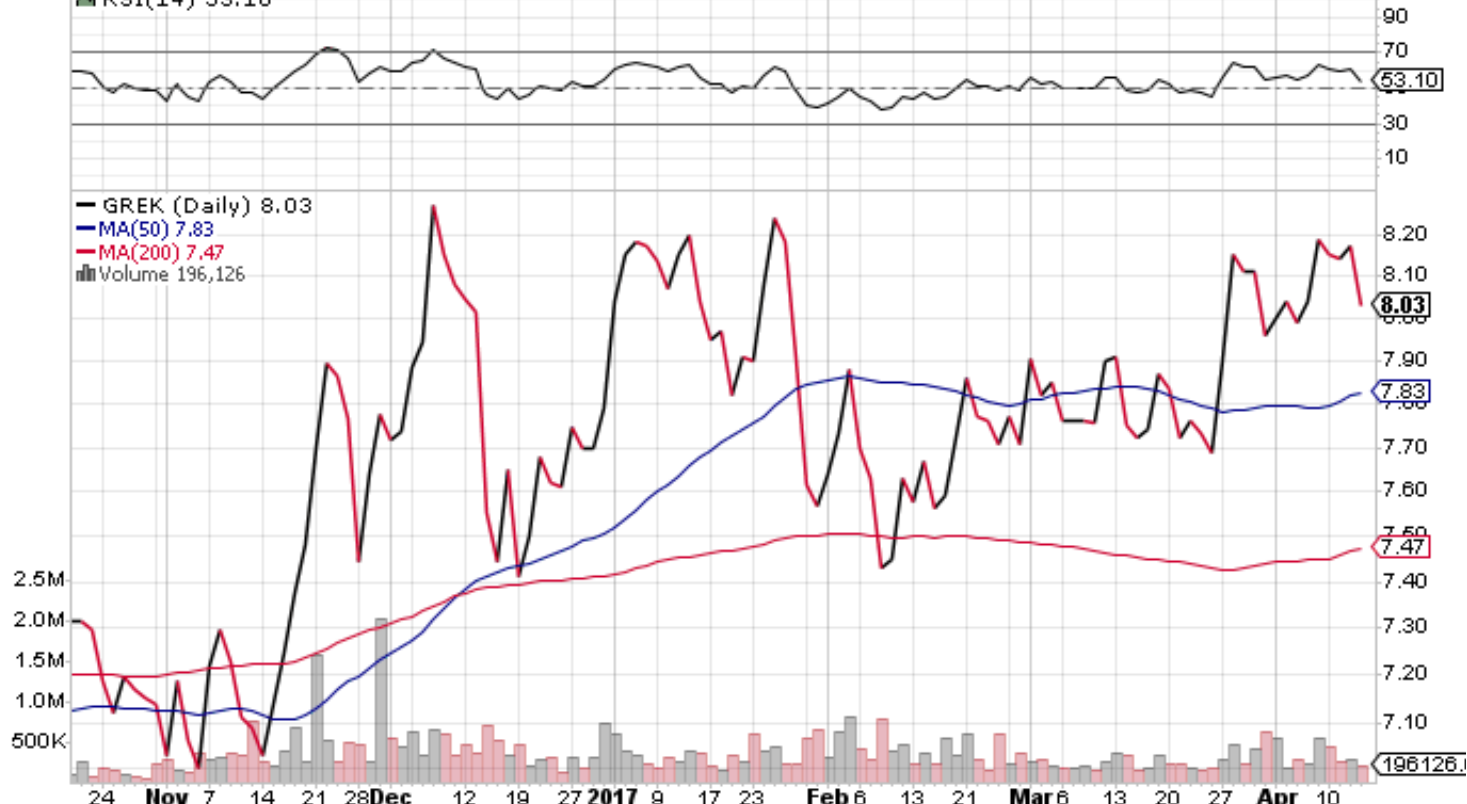
GREK Global X MSCI Greece ETF AMEX

© StockCharts.com

13-Apr-2017

Open 8.14 High 8.15 Low 8.01 Close 8.03 Volume 196.1K Chg -0.14 (-1.71%)

▲ RSI(14) 53.10



Europe

(FI) \$ US DOLLAR

\$USD US Dollar Index - Cash Settle (EOD) ICE

13-Apr-2017

Open 100.03 High 100.50 Low 99.93 Close 100.46 Chg -0.25 (-0.25%)

© StockCharts.com



Fixed Income

(FI) 20 yr TREASURY



Fixed Income

(FI) Barclays 7-10 Yr T-Bond Fund

IEF iShares 7-10 Year Treasury Bond ETF NYSE

© StockCharts.com

13-Apr-2017

Open 106.80 High 107.01 Low 106.61 Close 106.94 Volume 1.9M Chg +0.32 (+0.30%) ▲

▲ RSI(14) 69.58



Fixed Income

(FI) iShares BARCLAYS

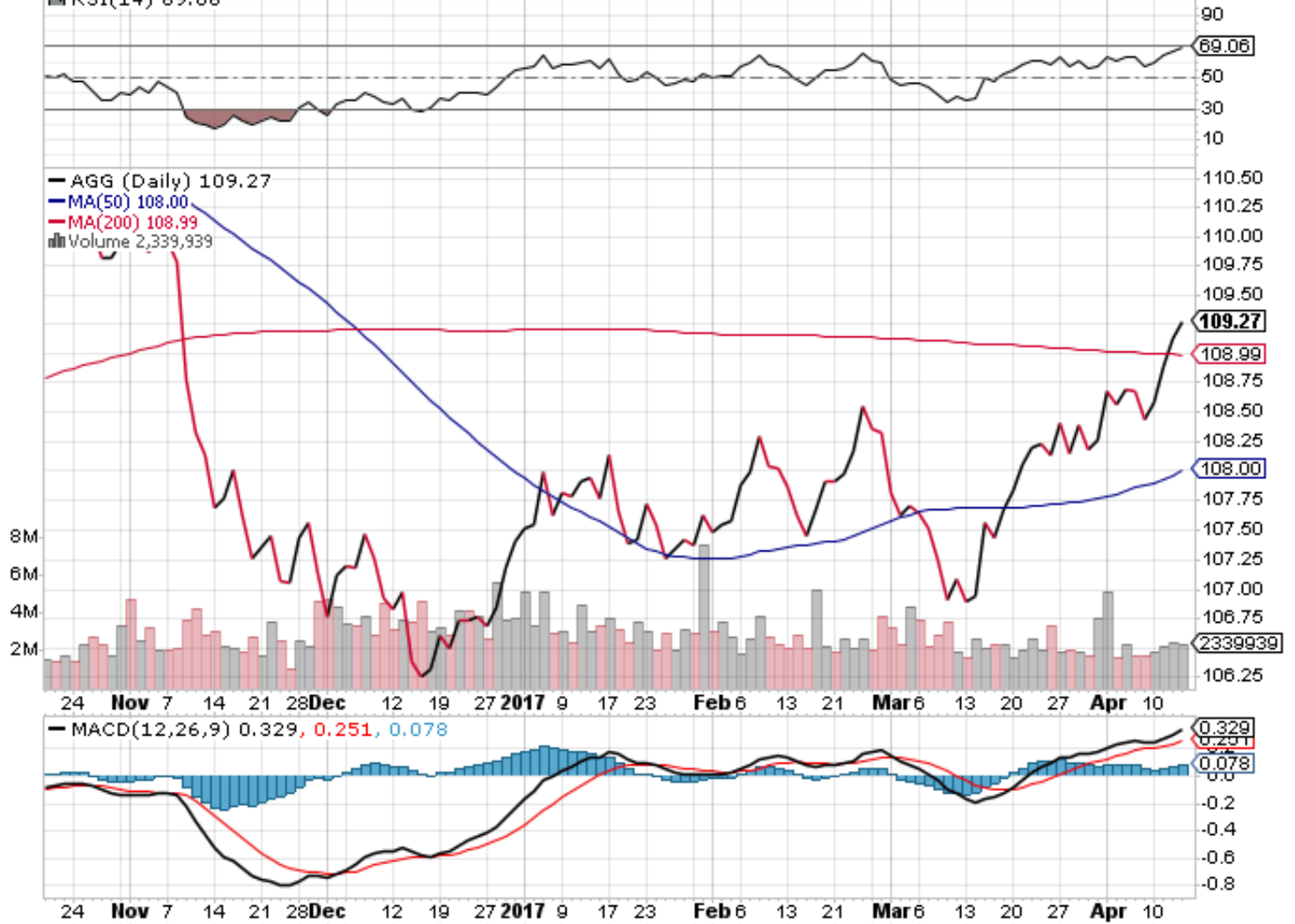
AGG iShares Core U.S. Aggregate Bond ETF NYSE

© StockCharts.com

13-Apr-2017

Open 109.25 High 109.39 Low 109.13 Close 109.27 Volume 2.3M Chg +0.14 (+0.13%) ▲

▲ RSI(14) 69.06



Fixed Income

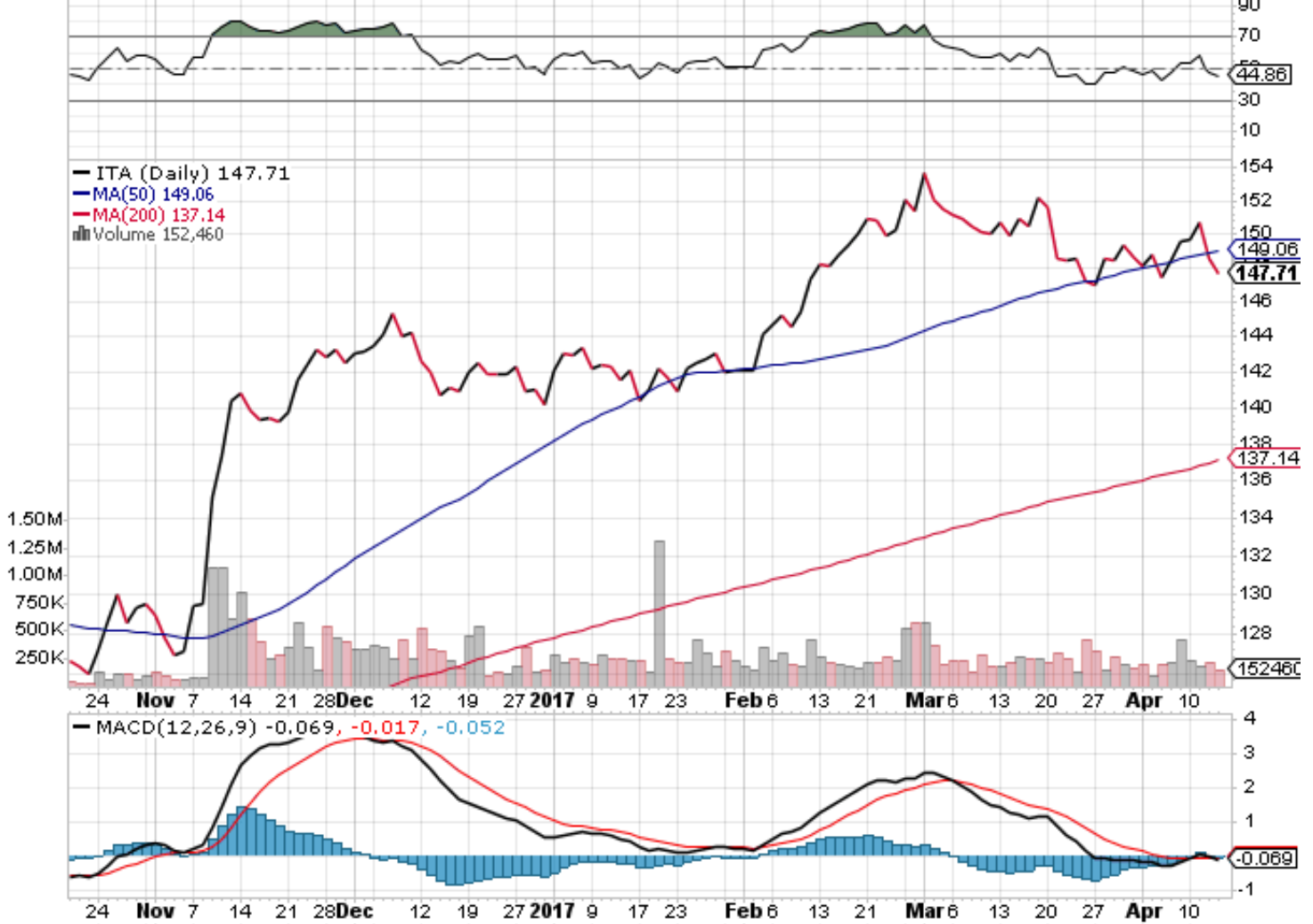
(US) Aerospace & Defense

ITA iShares U.S. Aerospace & Defense ETF NYSE

© StockCharts.com

13-Apr-2017 **Open** 148.28 **High** 148.86 **Low** 147.70 **Close** 147.71 **Volume** 152.5K **Chg** -0.85 (-0.57%) ▼

▲ RSI(14) 44.86



Equities

(US) iShares BIOTECH



US Equities