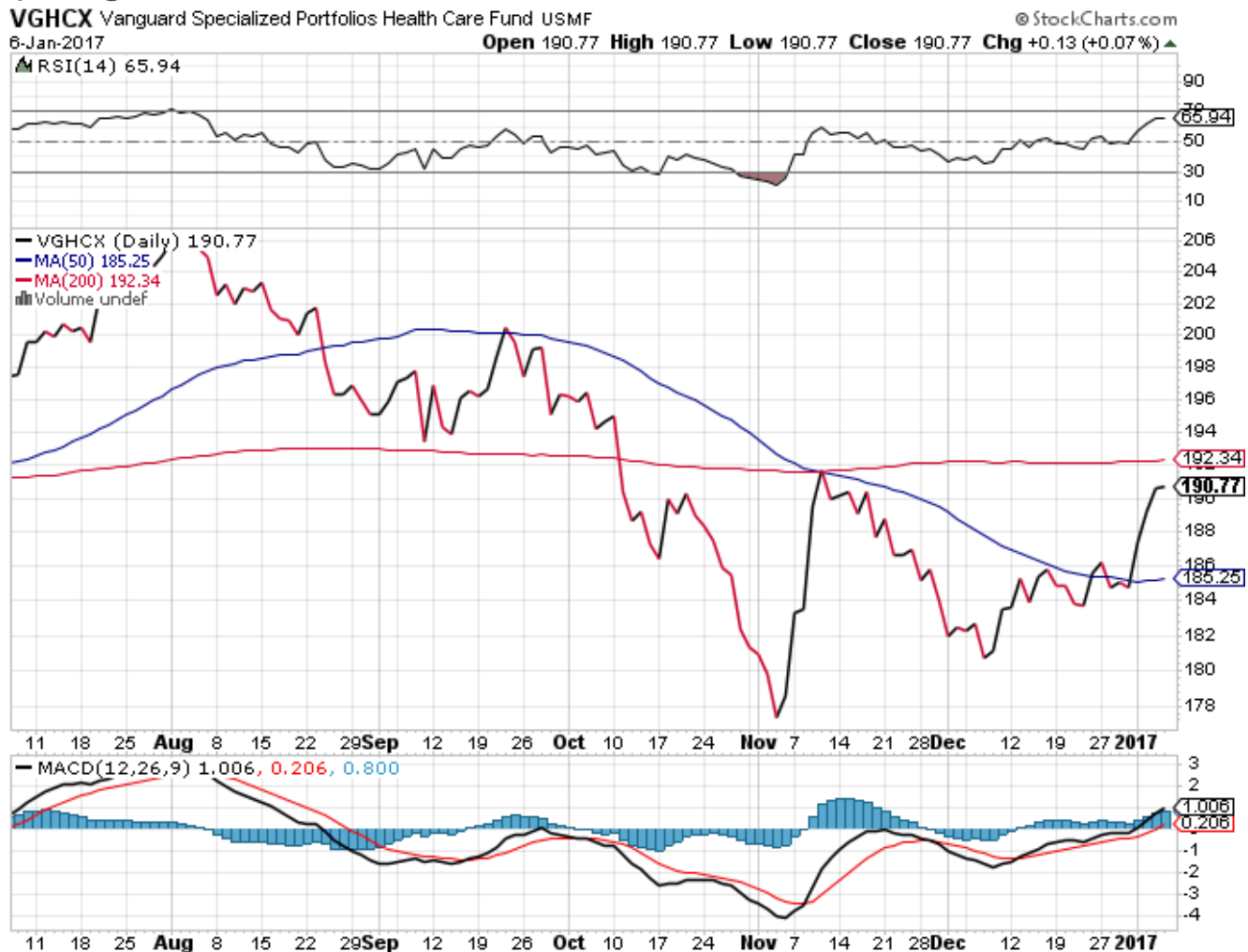
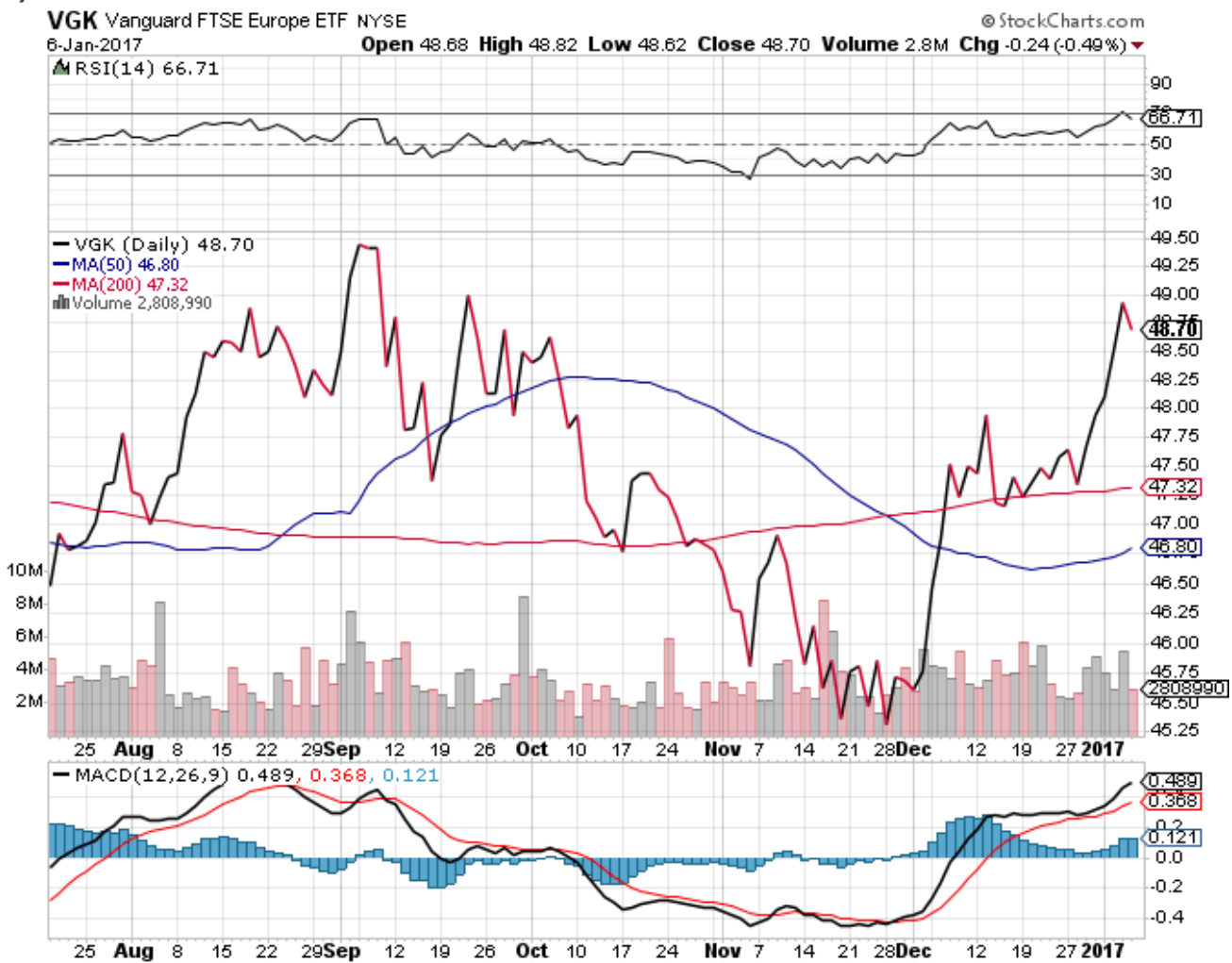


(E) Vanguard Global Health Care



Equities

(EU) EUROPE



Europe

(EU) GERMANY

\$DAX German DAX Composite (EOD) DEUT

© StockCharts.com

6-Jan-2017

Open 11560.52 **High** 11605.74 **Low** 11547.05 **Close** 11599.01 **Chg** +14.07 (+0.12%) ▲



Europe

(EU) Greece

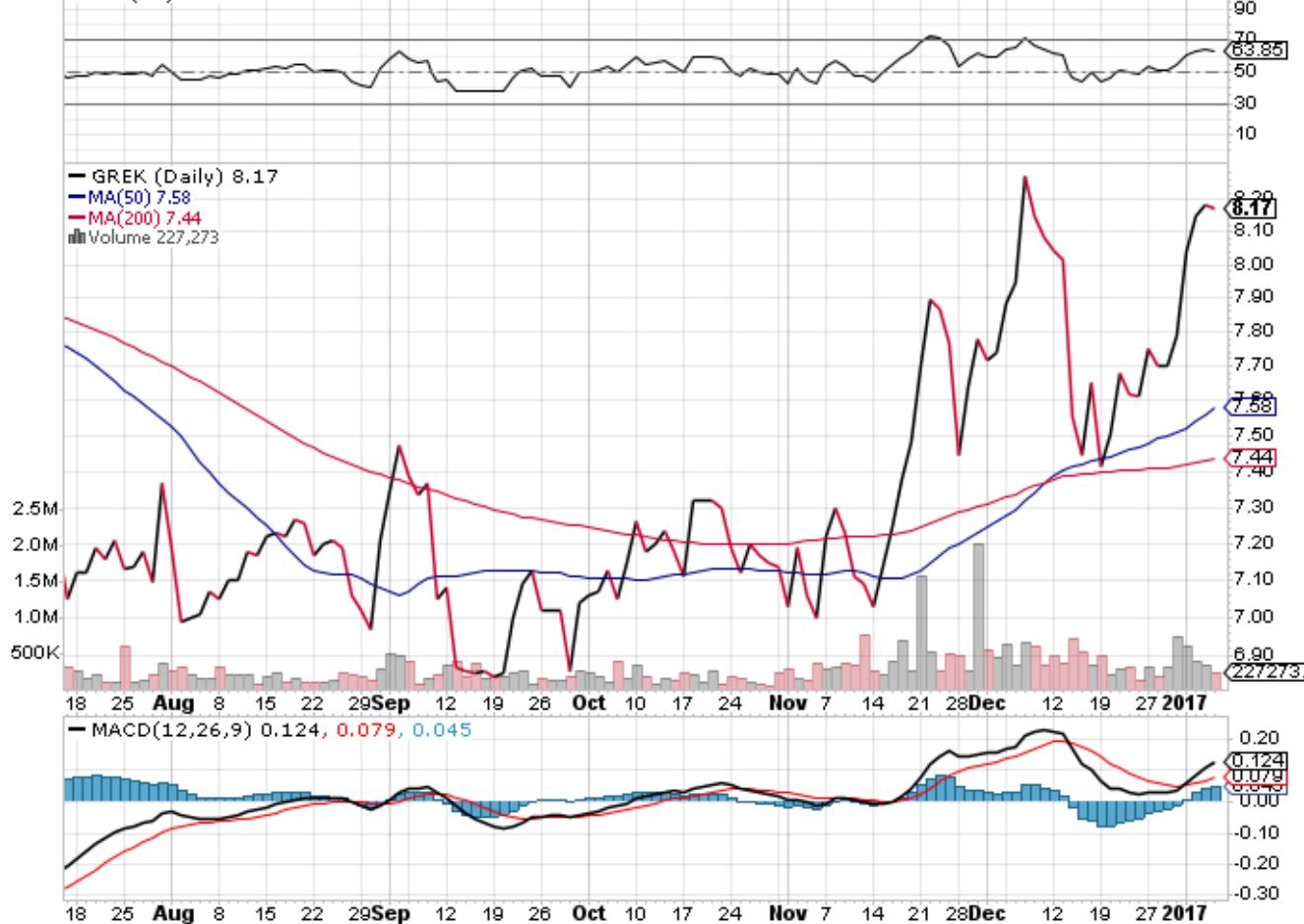
GREK Global X MSCI Greece ETF AMEX

© StockCharts.com

6-Jan-2017

Open 8.14 High 8.18 Low 8.04 Close 8.17 Volume 227.3K Chg -0.01 (-0.12%)

▲ RSI(14) 63.85



Europe

(FI) \$ US DOLLAR

\$USD US Dollar Index - Cash Settle (EOD) ICE

© StockCharts.com

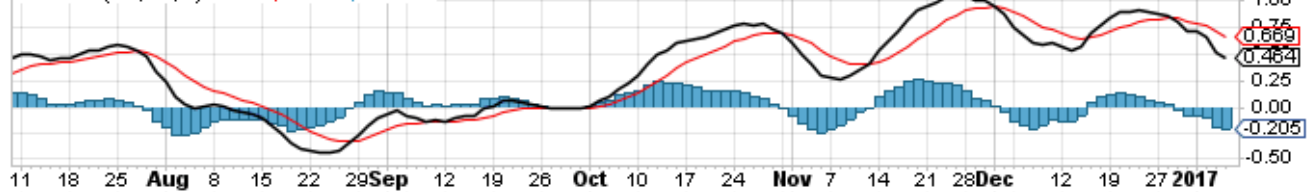
6-Jan-2017

Open 101.54 High 102.30 Low 101.39 Close 102.21 Chg +0.68 (+0.67%) ▲

▲ RSI(14) 52.07



MACD(12,26,9) 0.464, 0.669, -0.205



Fixed Income

(FI) 20 yr TREASURY



Fixed Income

(FI) Barclays 7-10 Yr T-Bond Fund

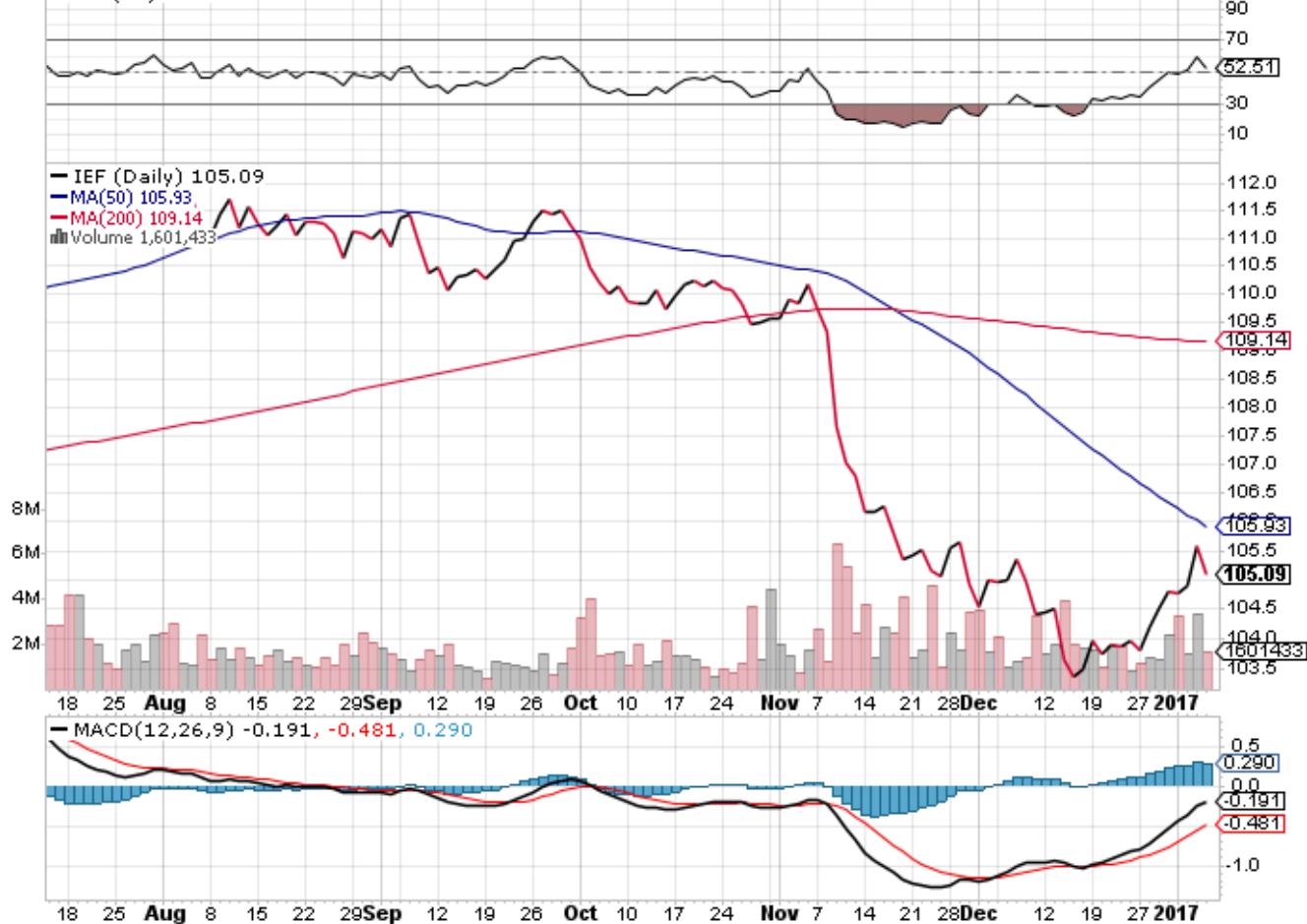
IEF iShares 7-10 Year Treasury Bond ETF NYSE

© StockCharts.com

6-Jan-2017

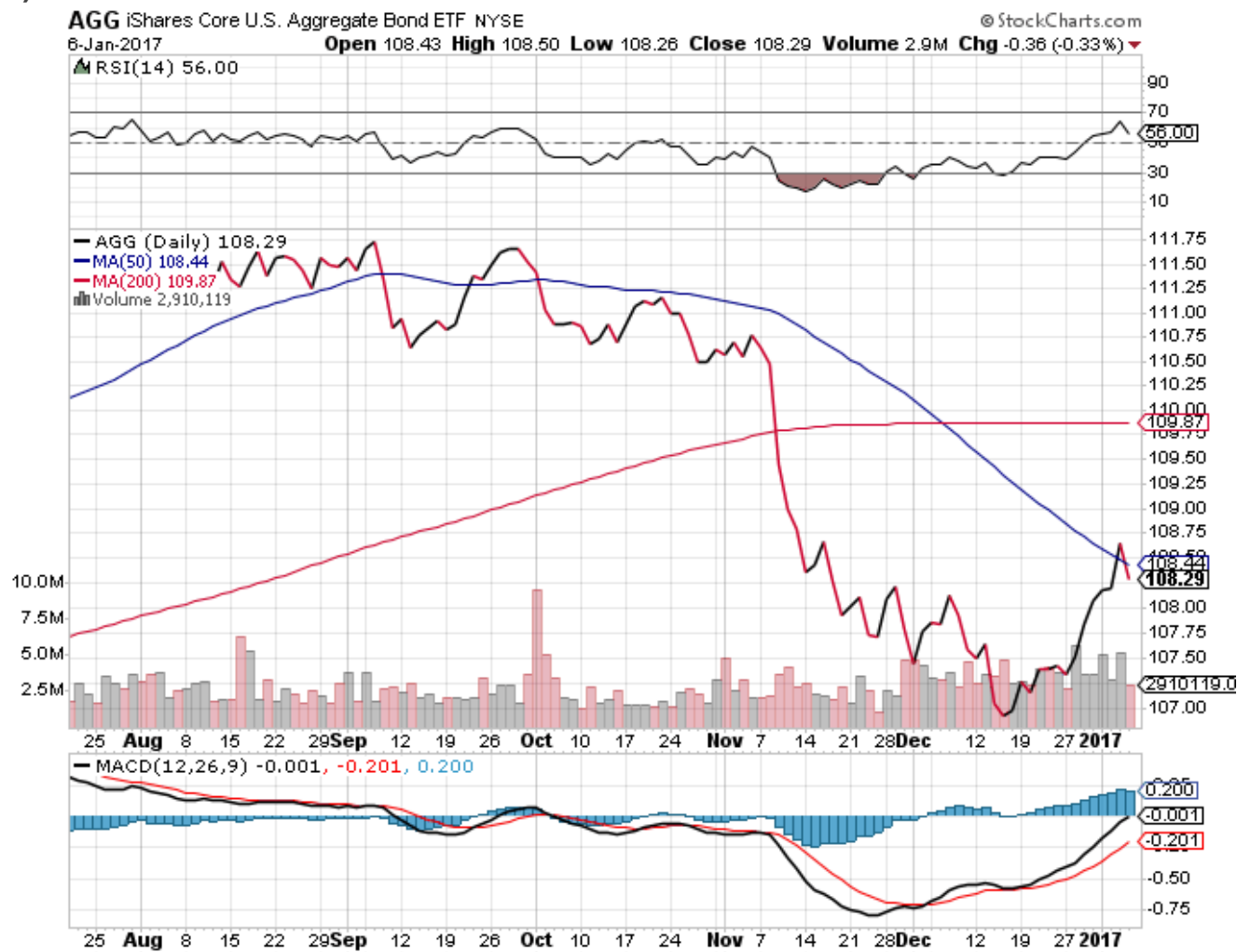
Open 105.18 High 105.38 Low 105.04 Close 105.09 Volume 1.6M Chg -0.48 (-0.45%)

▲ RSI(14) 52.51



Fixed Income

(FI) iShares BARCLAYS



Fixed Income

(US) Aerospace & Defense

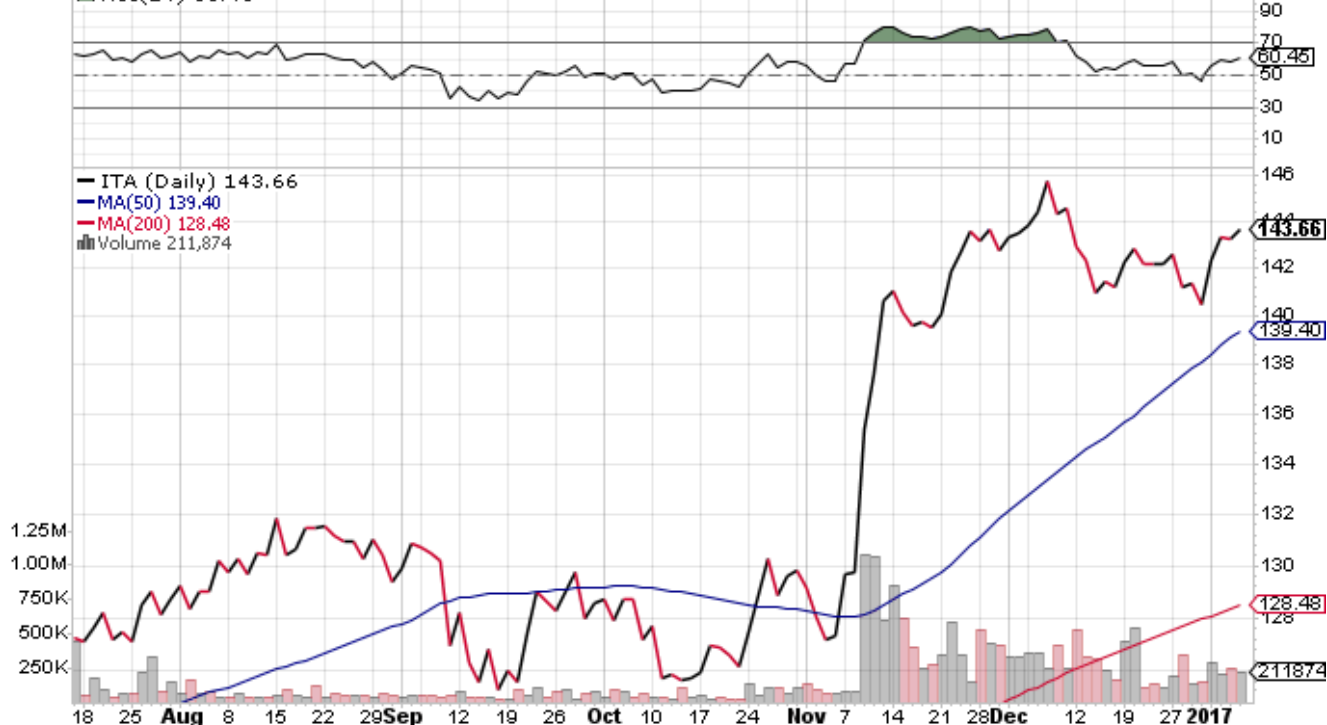
ITA iShares U.S. Aerospace & Defense ETF NYSE

© StockCharts.com

6-Jan-2017

Open 143.39 High 144.07 Low 142.96 Close 143.66 Volume 211.9K Chg +0.42 (+0.29%) ▲

▲ RSI(14) 60.45



MACD(12,26,9) 0.753, 0.884, -0.131



Equities

(US) iShares BIOTECH



US Equities