

(E) Russia

RSX Market Vectors Russia ETF Trust NYSE

© StockCharts.com

19-Feb-2016

Open 13.92 High 14.10 Low 13.80 Close 14.09 Volume 8.9M Chg +0.03 (+0.21%) ▲

▲ RSI(14) 53.68



Equities

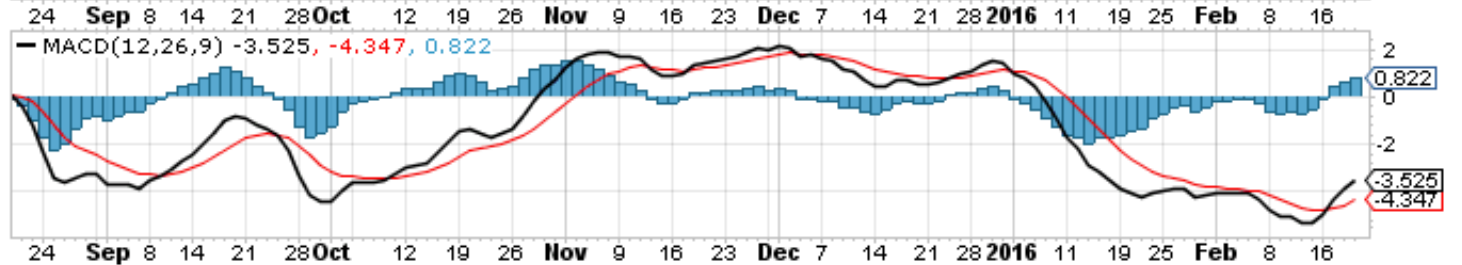
(E) Vanguard Global Health Care

VGHCX Vanguard Specialized Portfolios Health Care Fund USMF

© StockCharts.com

19-Feb-2016

Open 196.22 High 196.22 Low 196.22 Close 196.22 Chg +0.38 (+0.19%) ▲



Equities

(EU) EUROPE

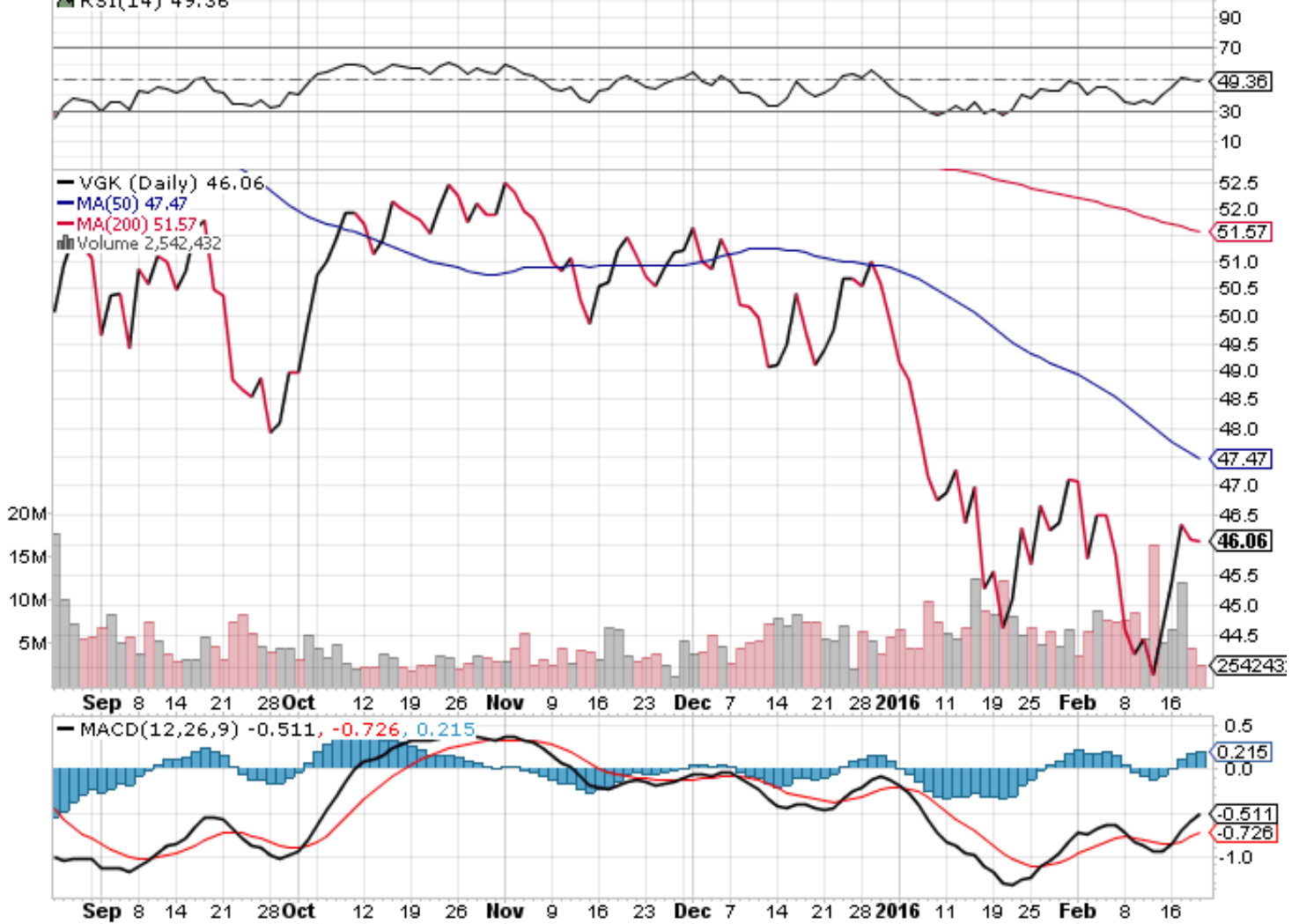
VGK Vanguard European VIPERs NYSE

© StockCharts.com

19-Feb-2016

Open 45.75 High 46.08 Low 45.57 Close 46.06 Volume 2.5M Chg -0.01 (-0.02%)

▲ RSI(14) 49.36



Europe

(EU) GERMANY

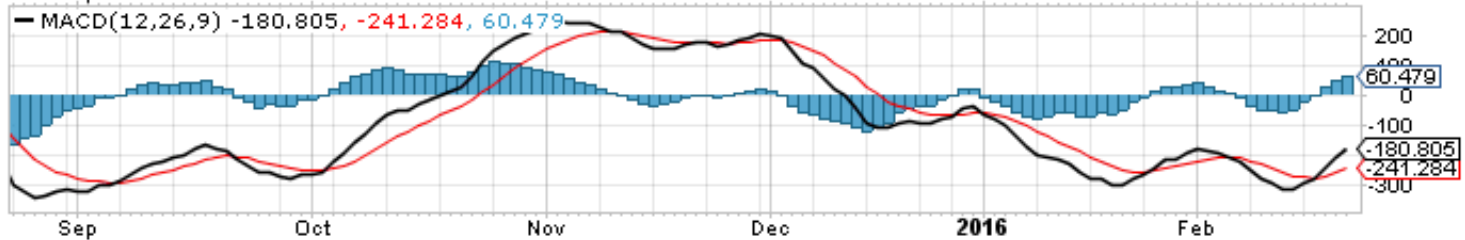
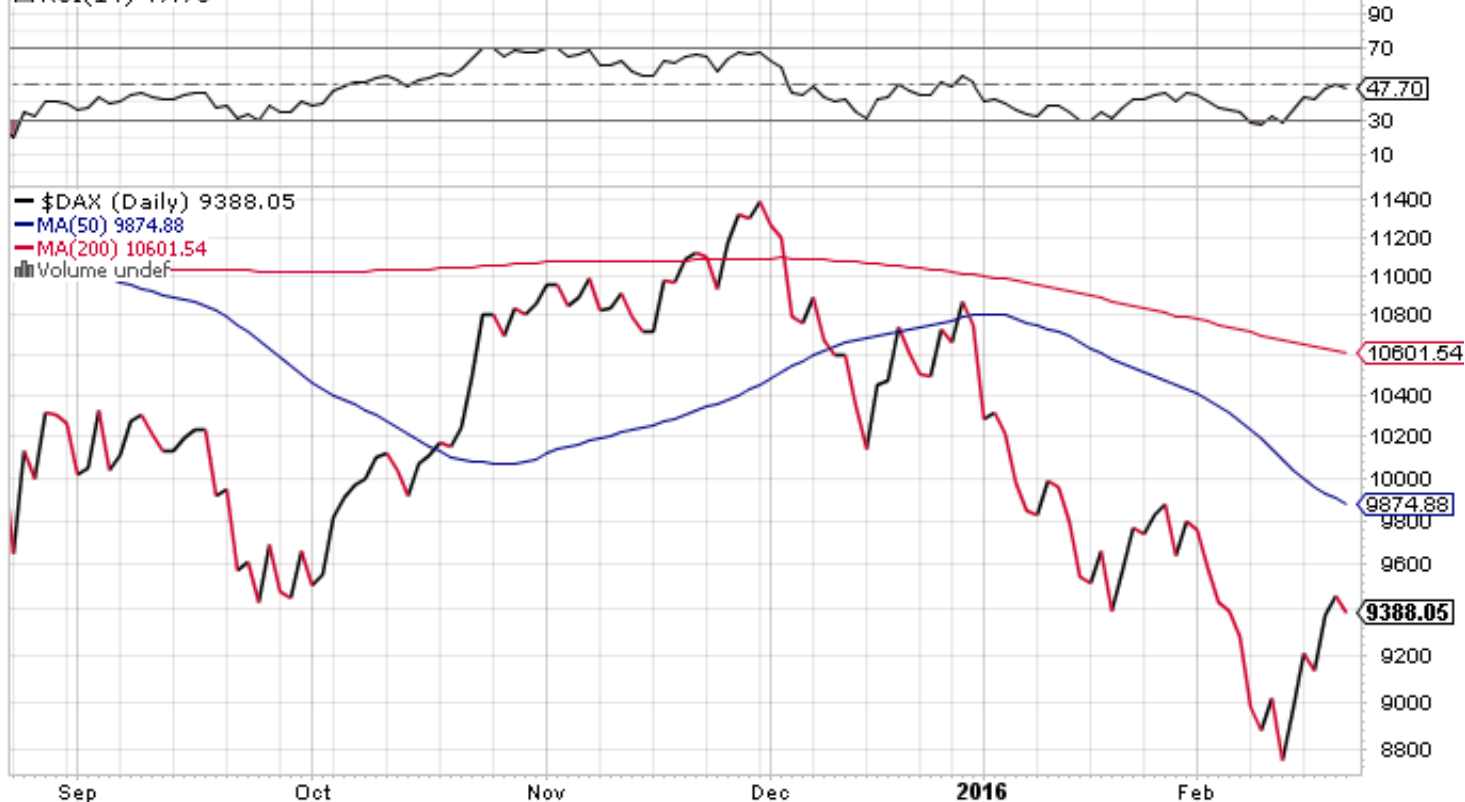
\$DAX German DAX Composite (EOD) DEUT

© StockCharts.com

19-Feb-2016

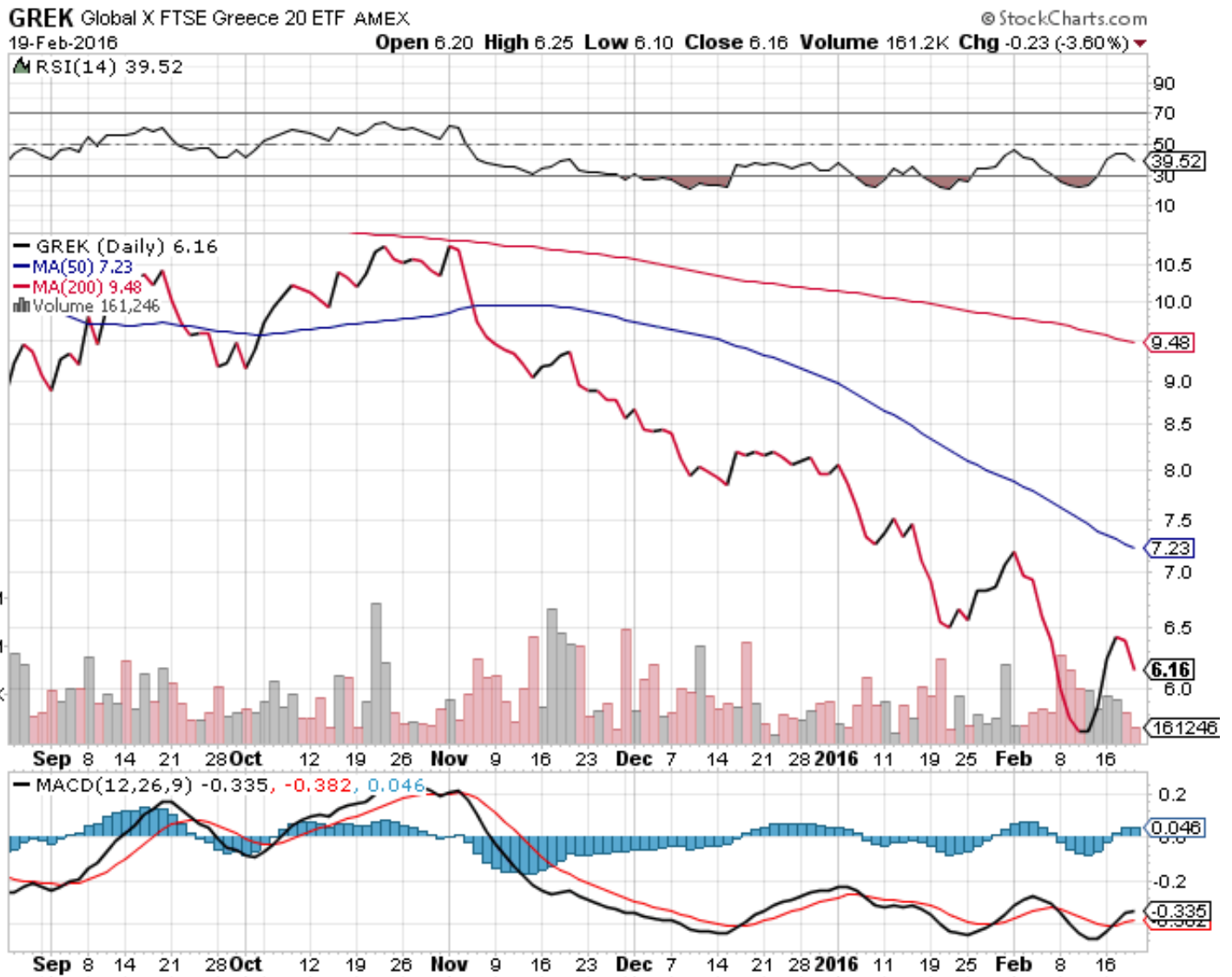
Open 9420.51 High 9474.02 Low 9319.10 Close 9388.05 Chg -75.59 (-0.80%) ▼

▲ RSI(14) 47.70



Europe

(EU) Greece



(FI) \$ US DOLLAR

\$USD US Dollar Index - Cash Settle (EOD) ICE

19-Feb-2016

© StockCharts.com

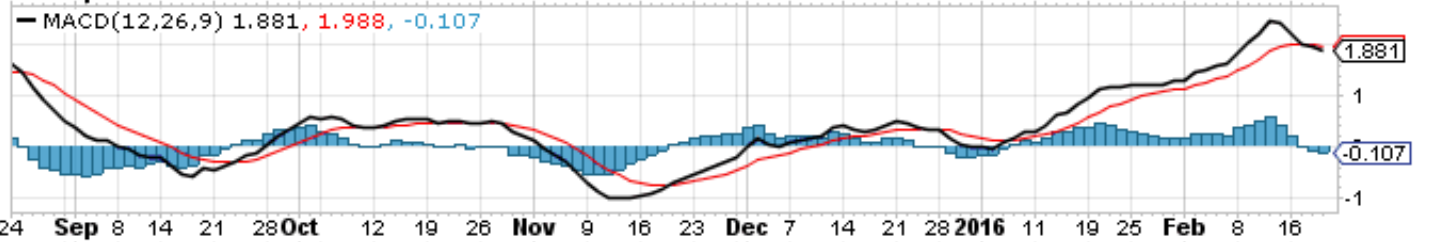
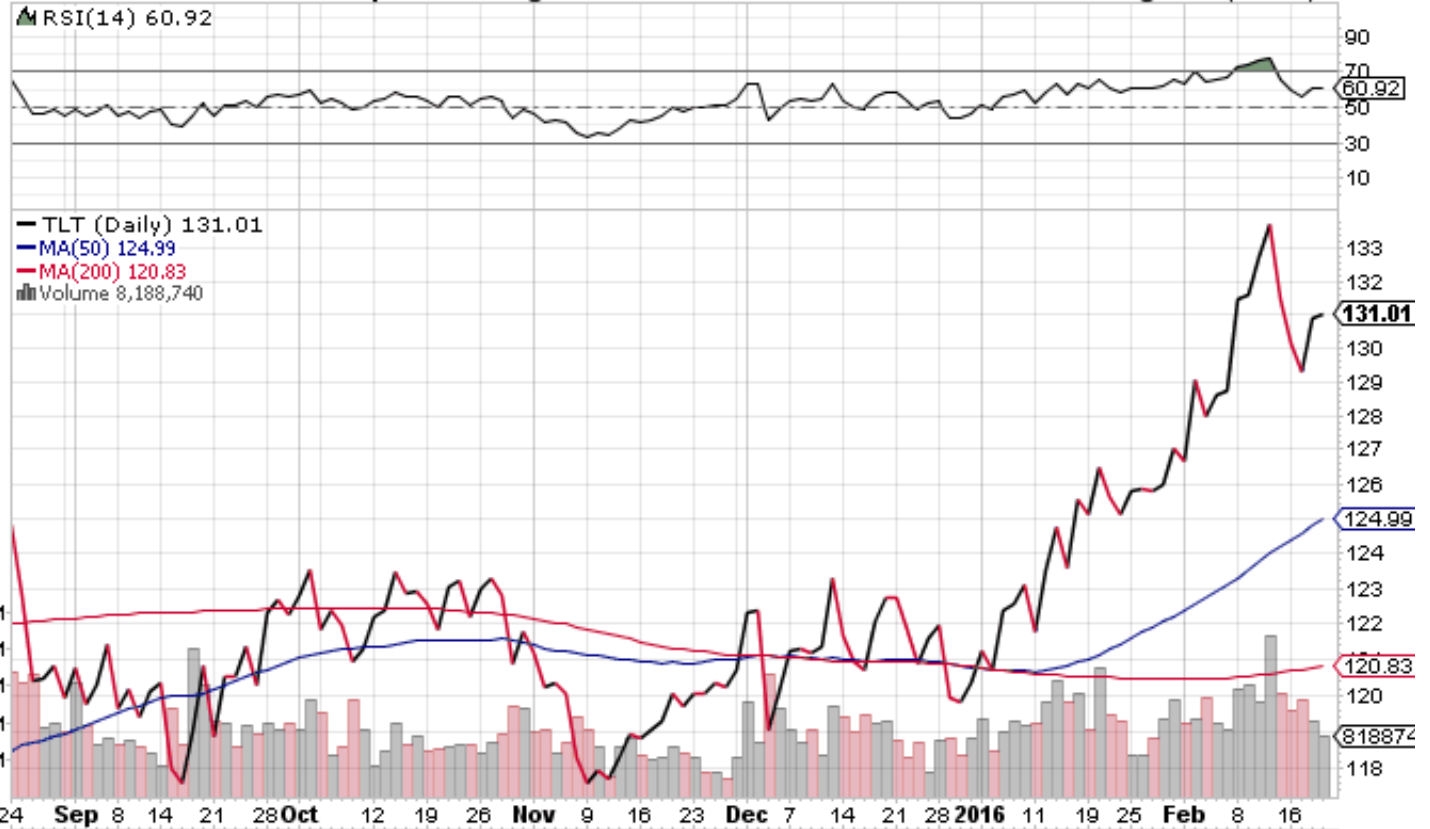
Open 96.75 High 97.26 Low 96.57 Close 96.60 Chg -0.36 (-0.37%) ▼



Fixed Income

(FI) 20 yr TREASURY

TLT iShares Barclays 20+ Year Treasury Bond Fund Nasdaq GM © StockCharts.com
 19-Feb-2016 **Open 130.94 High 131.82 Low 130.73 Close 131.01 Volume 8.2M Chg +0.11 (+0.08%)▲**



Fixed Income

(FI) Barclays 7-10 Yr T-Bond Fund

IEF iShares Barclays 7-10 Year Treasury Bond Fund NYSE

© StockCharts.com

19-Feb-2016

Open 110.39 High 110.62 Low 110.29 Close 110.49 Volume 1.3M Chg +0.00 (+0.00%) -

▲ RSI(14) 64.47



Fixed Income

(FI) iShares BARCLAYS

AGG iShares Barclays Aggregate Bond Fund NYSE

© StockCharts.com

19-Feb-2016

Open 109.80 High 109.85 Low 109.64 Close 109.79 Volume 2.3M Chg +0.02 (+0.02%) ▲

▲ RSI(14) 64.05



Fixed Income

(US) Aerospace & Defense

