

(A) ASIA (-) JAPAN

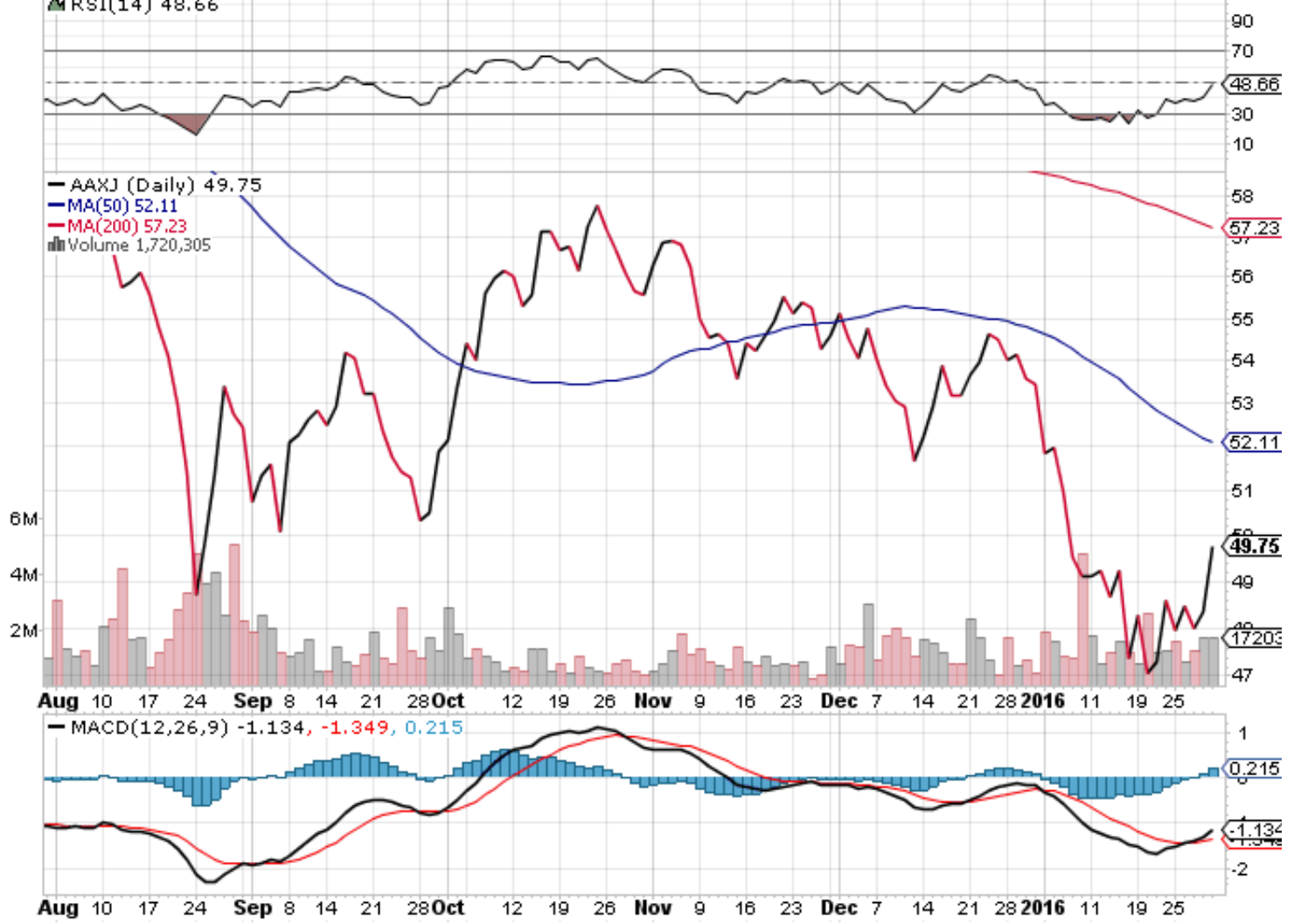
AAXJ iShares MSCI All Country Asia ex Japan Index Fund Nasdaq GM

© StockCharts.com

29-Jan-2016

Open 49.18 **High** 49.79 **Low** 49.16 **Close** 49.75 **Volume** 1.7M **Chg** +1.38 (+2.85%) ▲

▲ RSI(14) 48.66



Asia

(A) CHINA

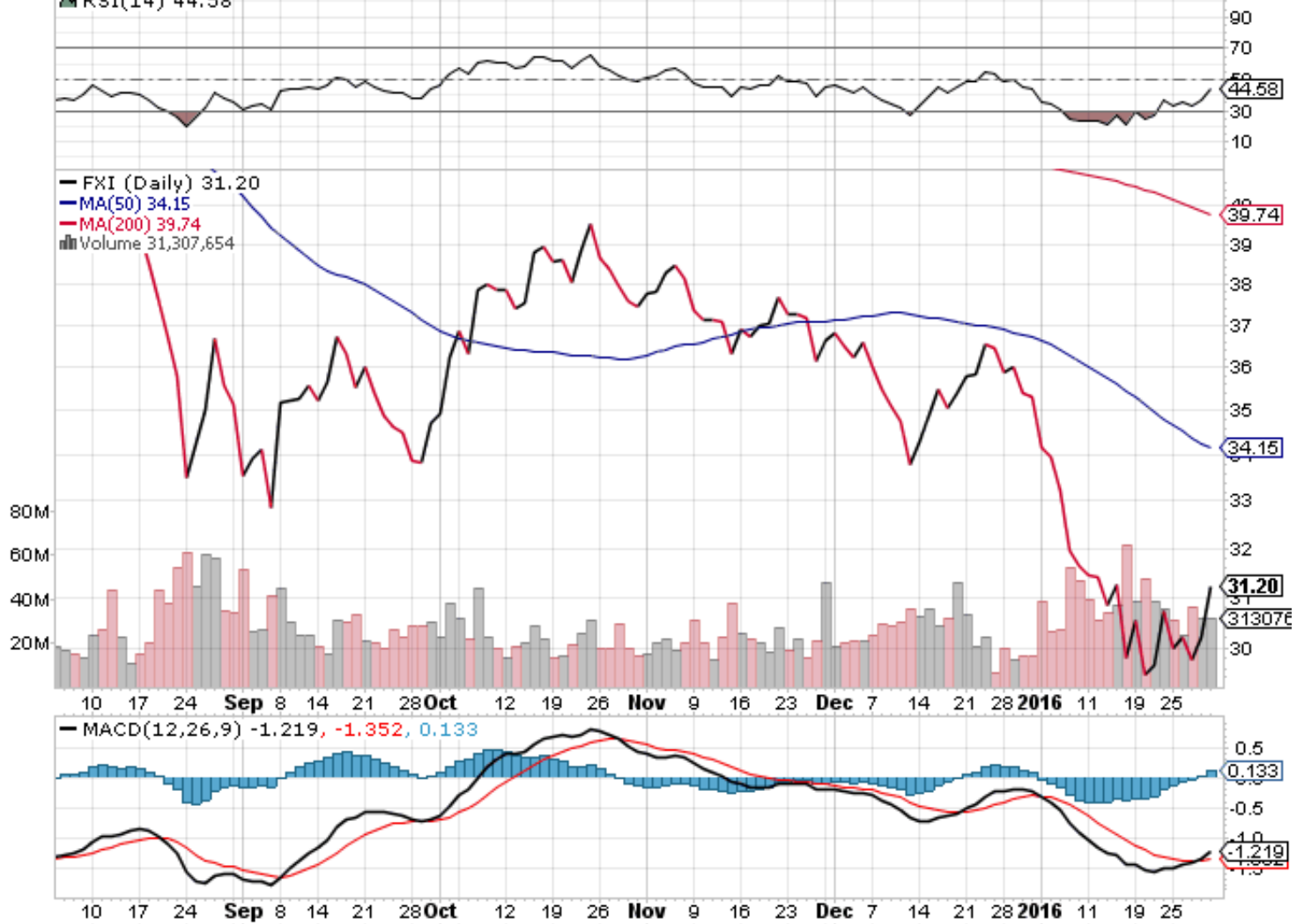
FXI iShares FTSE China 25 Index Fund NYSE

© StockCharts.com

29-Jan-2016

Open 30.87 High 31.23 Low 30.78 Close 31.20 Volume 31.3M Chg +0.98 (+3.24%) ▲

▲ RSI(14) 44.58



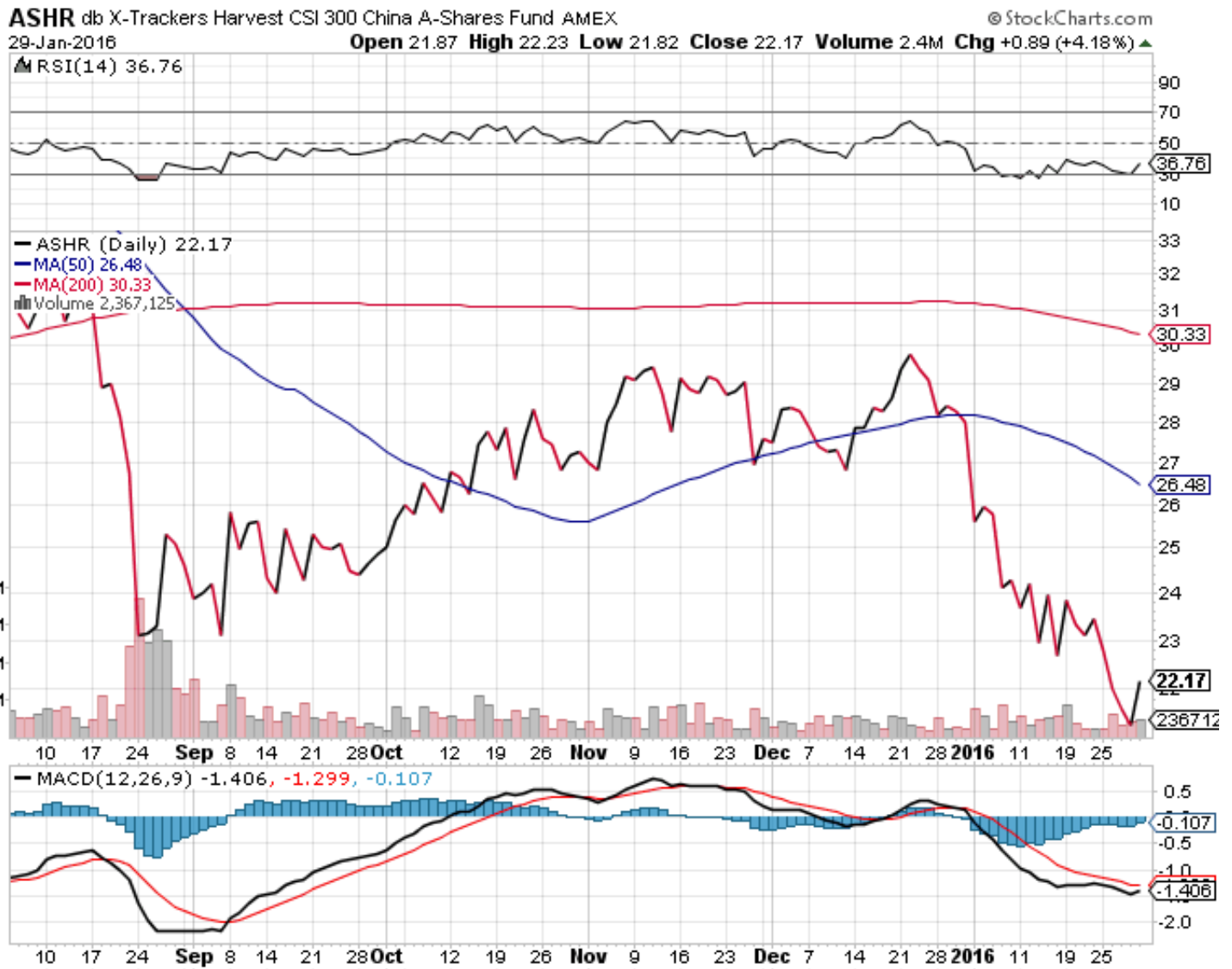
Asia

(A) China Small Caps



Asia

(A) China Trends



Asia

(C) COMMODITIES

\$CRB Reuters/Jefferies CRB Index (EOD) INDX

© StockCharts.com

29-Jan-2016

Open 166.27 High 167.52 Low 164.89 Close 166.75 Chg +1.53 (+0.93%)▲



Commodities

(C) Energy Index

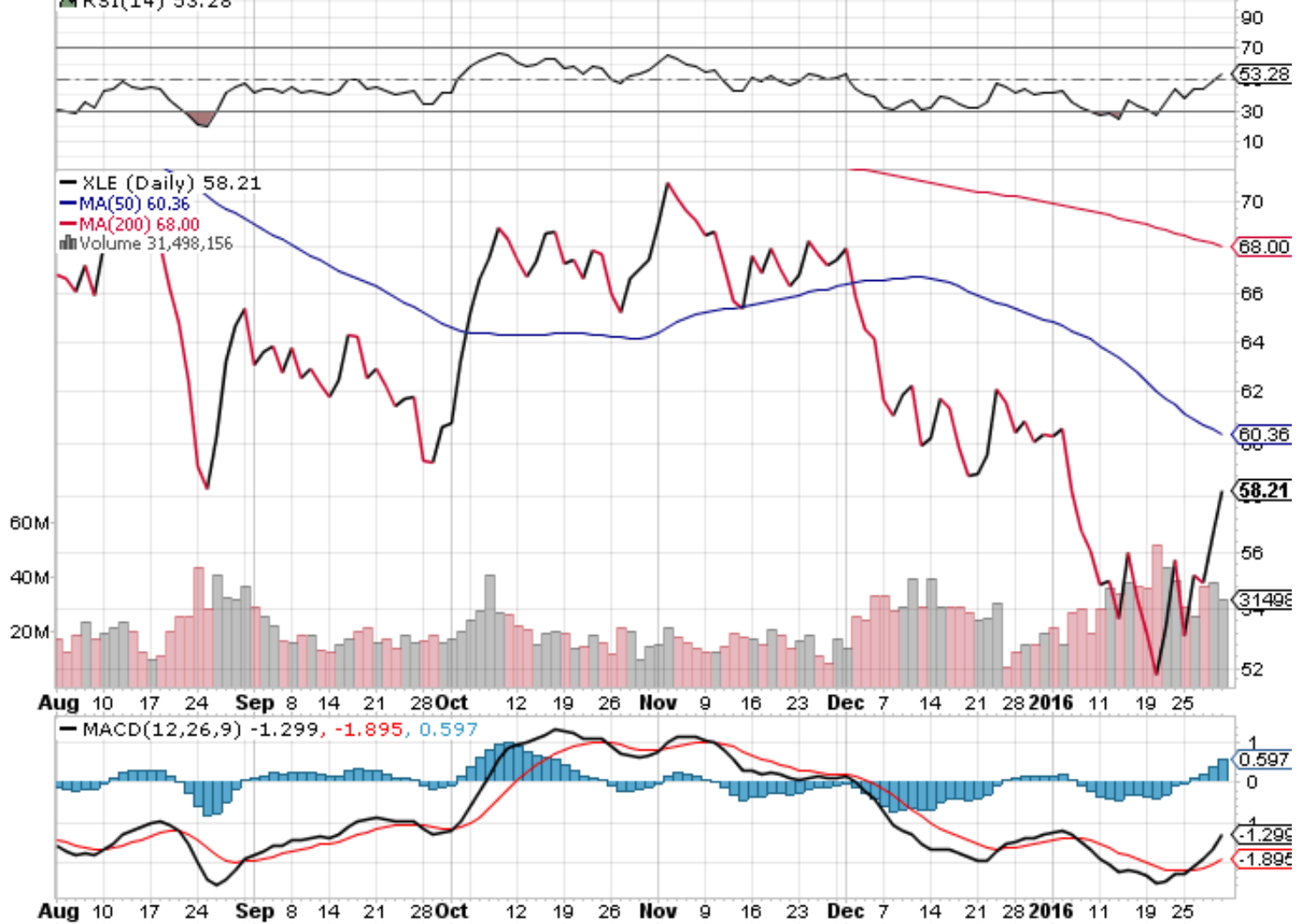
XLE Energy Select Sector SPDR NYSE

© StockCharts.com

29-Jan-2016

Open 58.68 High 58.27 Low 56.49 Close 58.21 Volume 31.5M Chg +1.85 (+2.92%) ▲

▲ RSI(14) 53.28



Commodities

(C) OIL & GAS

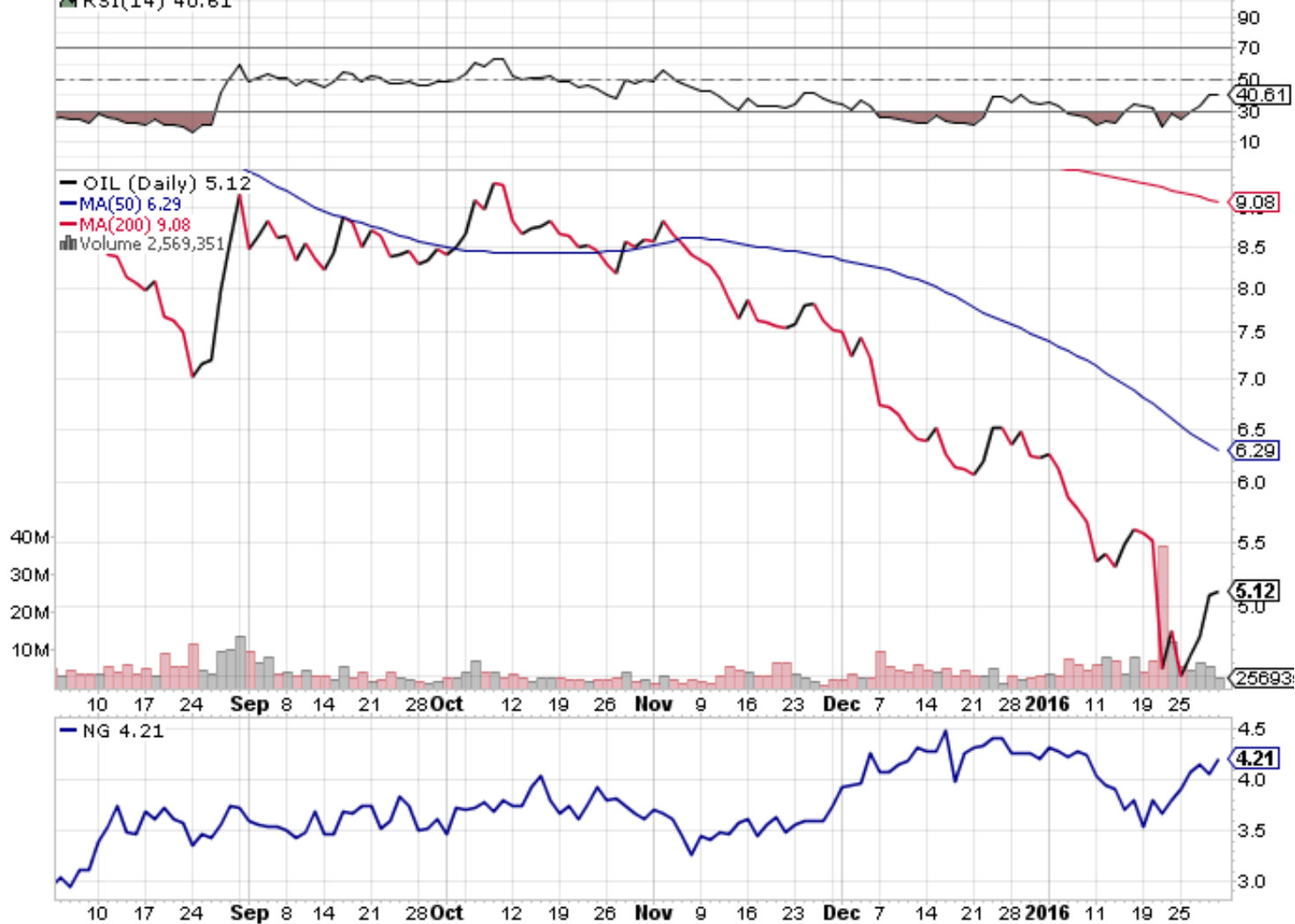
OIL iPath S&P GSCI Crude Oil Total Return Index ETN NYSE

© StockCharts.com

29-Jan-2016

Open 5.18 High 5.22 Low 4.94 Close 5.12 Volume 2.6M Chg +0.03 (+0.59%) ▲

▲ RSI(14) 40.61



Commodities (+) NG

(C) PRECIOUS METALS

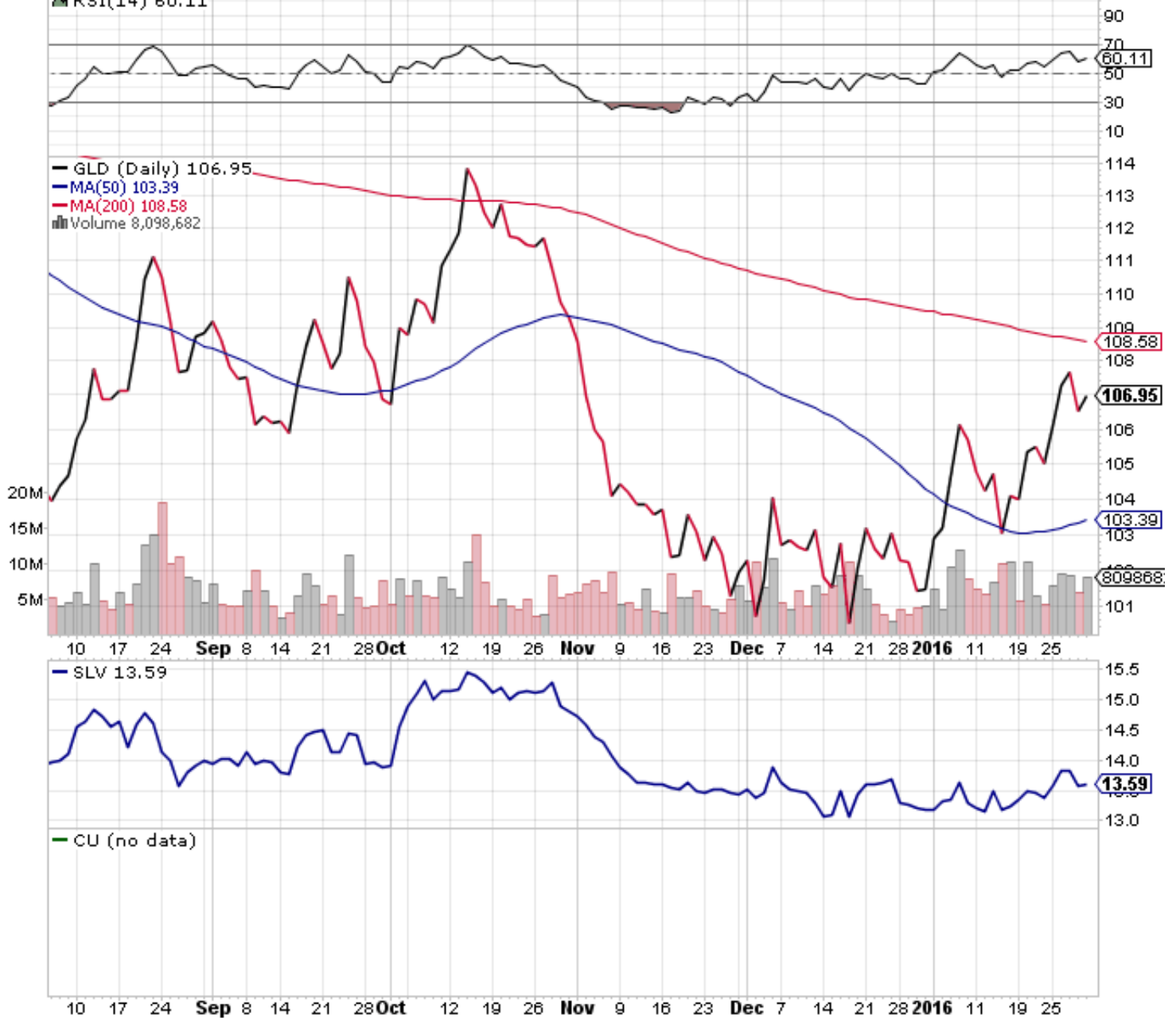
GLD SPDR Gold Trust Shares NYSE

© StockCharts.com

29-Jan-2016

Open 106.61 High 107.00 Low 106.26 Close 106.95 Volume 8.1M Chg +0.41 (+0.38%) ▲

▲ RSI(14) 60.11



Commodities (+) SLV & CU

(C) Silver



(E) BRAZIL

EWZ Brazil iShares NYSE

29-Jan-2016

Open 19.04 High 19.85 Low 18.97 Close 19.83 Volume 32.3M Chg +1.34 (+7.25%) ▲

© StockCharts.com

▲ RSI(14) 53.29

